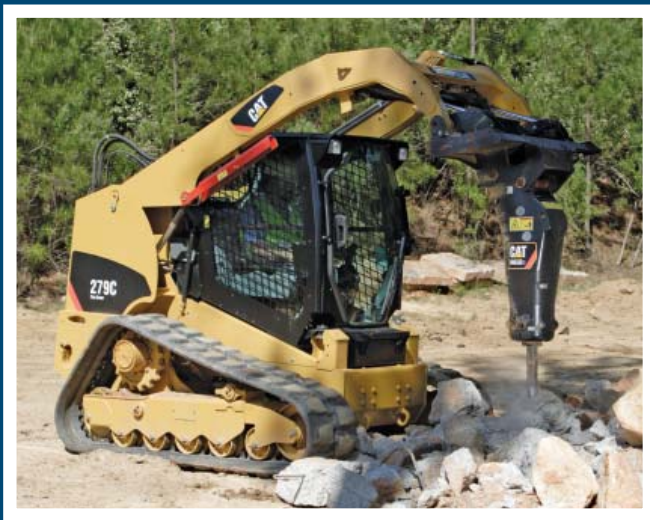


Mega-Track Loader Showcase

The John Deere CT315

John Deere has added the small frame CT315 to its compact track loader line, a 45-hp unit that already meets Interim Tier 4 emissions standards. The CT315 becomes Deere's first radial lift compact track loader, as well as its smallest, with a 12.6-in.-wide track and a narrow overall machine width of just over 60 in. While the CT315 is compact, it is a production machine, with a powerful 1,500-lb rated operating capacity. Its cushioned bucket and lift cylinders provide smooth deceleration at the end of the boom-lower position and also cushion the bucket when curling and dumping a load. Visibility is also a key to productivity — the CT315 offers an industry-best 360-degree view that's uninterrupted to the sides, both above and below the lift arms, note company officials. RS #50 For more information, go to www.ceunbound.com/info.



Caterpillar Rubber-Track Models

Three models of compact track loaders, the 279C, 289C and 299C, are the newest additions to the Caterpillar line of rubber-track loaders. The new loaders feature durable, steel embedded track and steel undercarriage components for maximum life in aggressive applications. The new tracked machines deliver solid traction and reduced wear on sites with sticky, rocky soils. The new compact track loaders combine a freshly engineered suspension-type undercarriage, designed and built by Caterpillar, with the chassis of their multi terrain loader counterparts, the 277C, 287C and 297C. The fully suspended undercarriage employs four independent torsion axles for a superior ride and excellent bucket load retention. Class leading track-on-ground of almost 70 in. provides good flotation and traction, low ground pressure and long track life. RS#51 For more information, go to www.ceunbound.com/info.

New Holland Compact Track Loaders

New Holland Construction offers three compact track loader models, the C175, C185 and C190. They combine the best performance advantages into one machine. You get the outstanding flotation, traction and stability of tracks along with the patented Super Boom load arm design, which allows for industry-leading, unobstructed rear visibility due to the absence of any rear frame towers. The Super Boom vertical lift also excels through increased productivity by providing high lift capacities, long forward dump reach and fast cycle times, so you do more in less time. With a wide array of versatile, easy-to-change attachments, New Holland compact track loaders are ideal for construction, utility and grounds maintenance. RS#52 For more information, go to www.ceunbound.com/info.



Case Series Compact Track Loaders

Case introduces its 400 Series 3 line of compact track loaders, which feature clean-burning, Tier III certified engines, with increases in horsepower for all four models. Pilot controls are now standard for all four Case Series 3 machines, the 420CT, 440CT, 445CT and 450CT, and Case is also offering a new cab with improved visibility and ergonomics. The 420CT and 445CT Series 3 models feature Case 3.2-liter turbocharged engines, while the 440CT and 450CT Series 3 models are powered by a 4.5-liter turbocharged Case engine. In addition to delivering Tier III certification, these new engines provide improved torque, which increases performance across the line. New exterior side lighting — a Case exclusive for compact track loaders — provides excellent all-around visibility for nighttime operation. RS#53 For more information, go to www.ceunbound.com/info.



Terex ASV PT-30 Compact Track Loader

At only 48 in. wide, the Terex ASV PT-30 compact track loader is sized to work in confined spaces yet productive enough to replace an entire crew of hand labor. The 33.7-hp (25.1-kW) PT-30 uses Terex ASV's patented Posi-Track undercarriage technology with suspension that maximizes traction and flotation. As a result of Terex ASV's patented technology, the machine's 3,350-lb operating weight is distributed down to only 2.8 lbs per sq in. of ground pressure. A wide-range of performance-matched attachments makes it ideal for many jobs. The PT-30 may be equipped with Terex ASV's general purpose 11-in. wide (280-mm) tracks or optional smooth turf (green) tracks for ultimate protection of finished surfaces. RS#54 For more information, go to www.ceunbound.com/info.

Bobcat All-Steel Undercarriages

Bobcat Co. introduces the first all-steel track option for compact track loaders. The steel track option is similar to the tracks used on bulldozers. Customers who work exclusively in earthmoving or abrasive environments, such as demolition or forestry, will experience increased pushing force and longer life of the undercarriage. The steel track undercarriage is best suited for contractors working in conditions where rubber or rubber-reinforced steel tracks could become damaged. For instance, the jagged edges of concrete and rebar that demolition contractors encounter and the sharp tree branches forestry contractors come in contact with can quickly wear down or damage rubber tracks. With steel tracks, these customers reduce the potential for downtime. The new Bobcat steel track undercarriage is available on the Bobcat T250, T300 and T320 compact track loaders. RS#55 For more information, go to www.ceunbound.com/info.



Komatsu CTLs

Komatsu America Corp.'s rubber-tracked compact track loaders have a wide supporting surface allowing the machines to effectively work on any type of soil, including mud and snow. The CK30-1 features an operating weight of 9,546 lbs, and the CK35-1 boasts an operating weight of 10,053 lbs. Both machines are powered by Komatsu engines delivering 84 hp. The turbocharged and water-cooled direct fuel injection engines meet EPA emissions requirements and remain fuel efficient without sacrificing power or productivity. With a low 4- to 5-psi ground pressure, these machines are ideal for any job and prove superior in soft conditions or where minimum soil compaction is desired. The CK30-1 loader utilizes a radial lift path technology, while the larger CK35-1 is a vertical lift path loader. The radial lift path is ideally suited to ground engaging applications, while the vertical lift path, with its 129-in. hinge pin height (8 in. more than the CK30-1), is more suited to material handling and truck loading operations. RS#56 For more information, go to www.ceunbound.com/info.